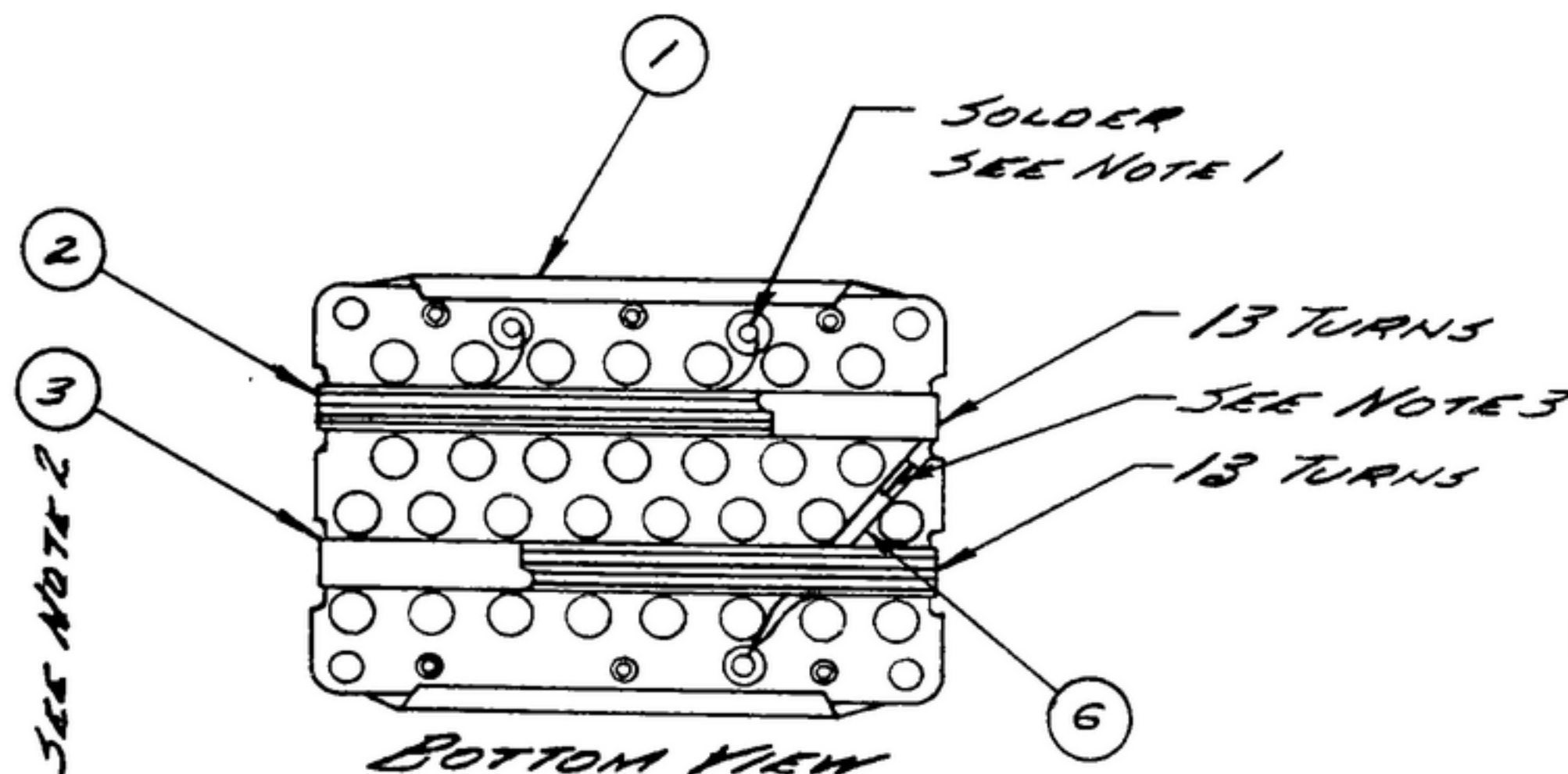


NOTICE: WHEN GOVERNMENT DRAWINGS, SPECIFICATIONS, OR OTHER DATA ARE USED FOR ANY PURPOSE OTHER THAN IN CONNECTION WITH A DEFINITELY RELATED GOVERNMENT PROCUREMENT OPERATION, THE UNITED STATES GOVERNMENT THEREBY INCURS NO RESPONSIBILITY FOR ANY CALIBRATION UNAUTHORIZED; AND THE FACT THAT THE GOVERNMENT MAY HAVE FORMULATED, FURNISHED, OR IN ANY WAY SUPPLIED THE SAID DRAWINGS, SPECIFICATIONS, OR OTHER DATA IS NOT TO BE REGARDED BY IMPLICATION OR OTHERWISE AS AN ENDORSEMENT OR AS ANY BASIS FOR LIABILITY OR OTHER PERSON OR CORPORATION, OR CONVEYING ANY RIGHTS OR PERMISSIONS TO REPRODUCE, COPY, OR SELL ANY PATENTED INVENTION THAT MAY IN ANY WAY BE RELATED THEREBY.

THIS DOCUMENT HAS BEEN PURCHASED BY THE GOVERNMENT AND MAY BE REPRODUCED AND USED IN CONNECTION WITH ANY GOVERNMENT PROCUREMENT OR MAINTENANCE OPERATION.

* FOR INFORMATION ONLY, CONTRACTOR MAY AT HIS OPTION DEVIATE FROM THESE PROCESS DETAILS.

PROCESS DETAILS		REVISIONS		
SYM	DESCRIPTION	DATE	APPROVAL	
A SWE APPROVAL				
SYM <i>PR10042-11</i>				
B₃ <i>C.A. 84693</i>				
A ₂	A ₁ -ADDED "WARP 3.062" TO NOTE 1. A ₂ -ADDED ITEM 5.	13 NOV 59	42428-PC-59 PME	
B ₃	B, COLLINS PART NOS REPLACED BY THE SWE PART NOS SHOWN B ₂ DELETED "5/16 WIDE" FROM NOTE 4 B ₃ ADDED ITEM 6.	5 APRIL 60	42428-PC-59 PME	



- NOTES:
- (A) 1. ALL SOFT SOLDERING PER SPEC MIL-S-6872 USING ROSIN CORE SOLDER PER SPEC QQ-S-571, COMP S160 WARP 3.062
 - 2. WRAP BOARD (1) WITH TAPE (3), IN LOCATION SHOWN, OVERLAPPING 1/2 INCH. WRAP ON TOP OF TAPE (3), 26 TURNS OF WIRE (2) SOLDER ENDS AS SHOWN & COAT WIRE WITH VARNISH (4) *DC 996 AS SUPPLIED BY THE DOW CORNING CORP., CHICAGO, ILL., OR EQUAL. WRAP TOP OF WIRE (2) WITH TAPE (3) OVERLAPPING 1/2 INCH AS IN THE FIRST TAPE LAYER.
 - (B₂) 3. TAPE BOTH SIDES OF Crossover.
 - 4. SHALL BE #56, AS SUPPLIED BY THE MINNESOTA MINING & MFG CO, ST PAUL, MINN, OR EQUAL.

ITEM	REQ'D	PART NO.	DESCRIPTION	MATL	MATL SPEC	NOTES
6	AS REQ'D	SM-249038-2	TAPE, ELEC. 1/8 WIDE			4
5	AS REQ'D		SOLDER, SOFT			1
4			VARNISH			
3		SM-B-249038-1	TAPE - ELEC. 5/16 WIDE			2 & 4
2	AS REQ'D	SM-B-28320	WIRE - MAGNET			2
1		SM-B-249029	BOARD ASSY - XTAL RET.			

LIST OF MATERIAL

COLLINS PART NO. *558-0396-002*

COLLINS NO.	QTY	NEXT ASSY	USED ON
<i>558-0396-002</i>	<i>1</i>	<i>SM-D-249007</i>	<i>SG-DL-248725</i>

UNLESS OTHERWISE SPECIFIED:
 DECIMAL DIMENSIONS INCLUDING HOLE SIZES MAY VARY ±.005
 FRACTIONAL DIMENSIONS INCLUDING HOLE SIZES MAY VARY ±1/64
 MACHINED ANGLES MAY VARY ±.1°
 SHEARED ANGLES MAY VARY ±.25°
 BROKEN ANGLES MAY VARY ±.1°
 ECCENTRICITY BETWEEN ANY DIAMETERS ON THE SAME CENTERLINE SHALL NOT EXCEED .010 TOTAL INDICATOR READING.
 ALL DIMENSIONS ARE FINISH DIMENSIONS INCLUDING APPLIED FINISH AND ARE GIVEN IN INCHES.

COLLINS-RADIO CO.
 CEDAR RAPIDS, IOWA
14214-PH-51-93
 SIGNAL CORPS
 REVIEWED *PME*
 APPROVED *HLV*
 DATE *18 MAR. 58*

BOARD A554 -
CRYSTAL RETAINER

DEPARTMENT OF THE ARMY
 SIGNAL CORPS ENGINEERING
 LABORATORIES
 FORT MONMOUTH NEW JERSEY
SM-B-249038